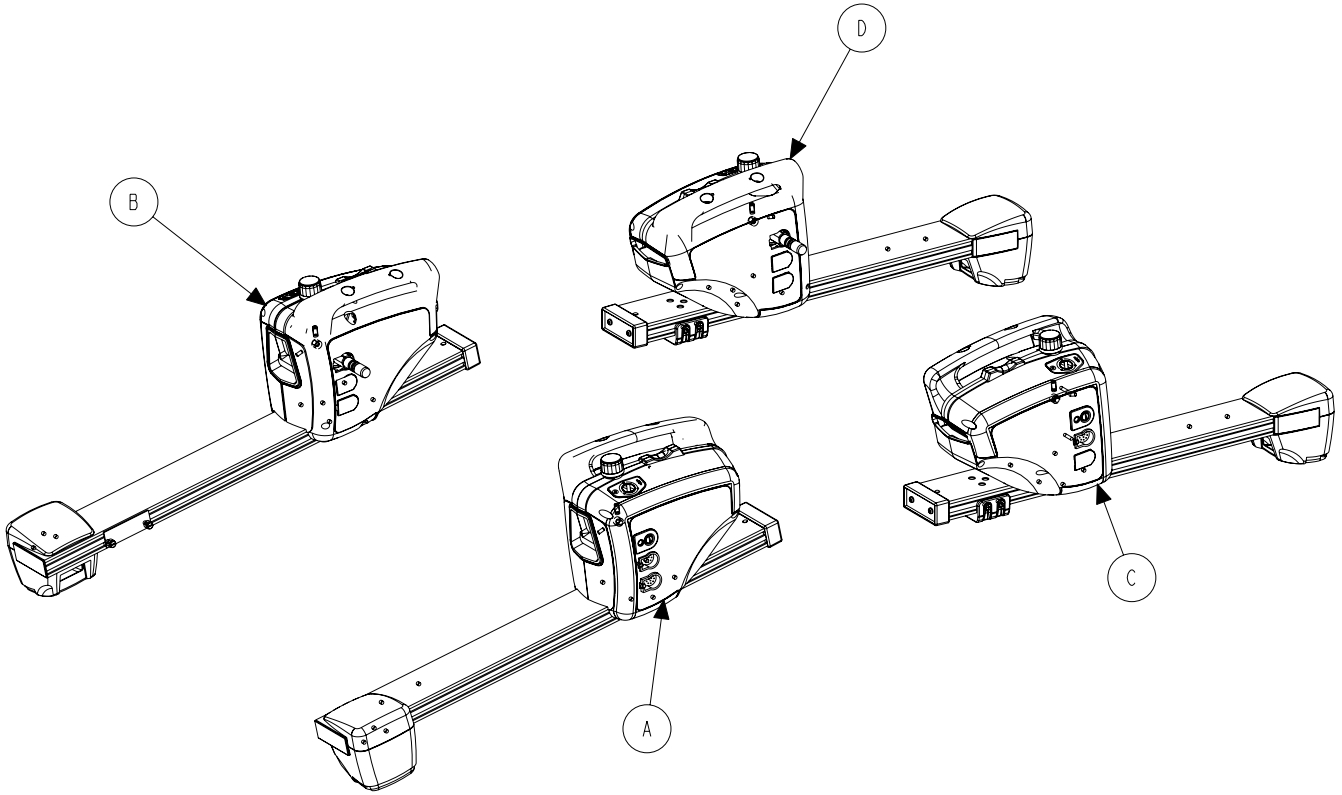


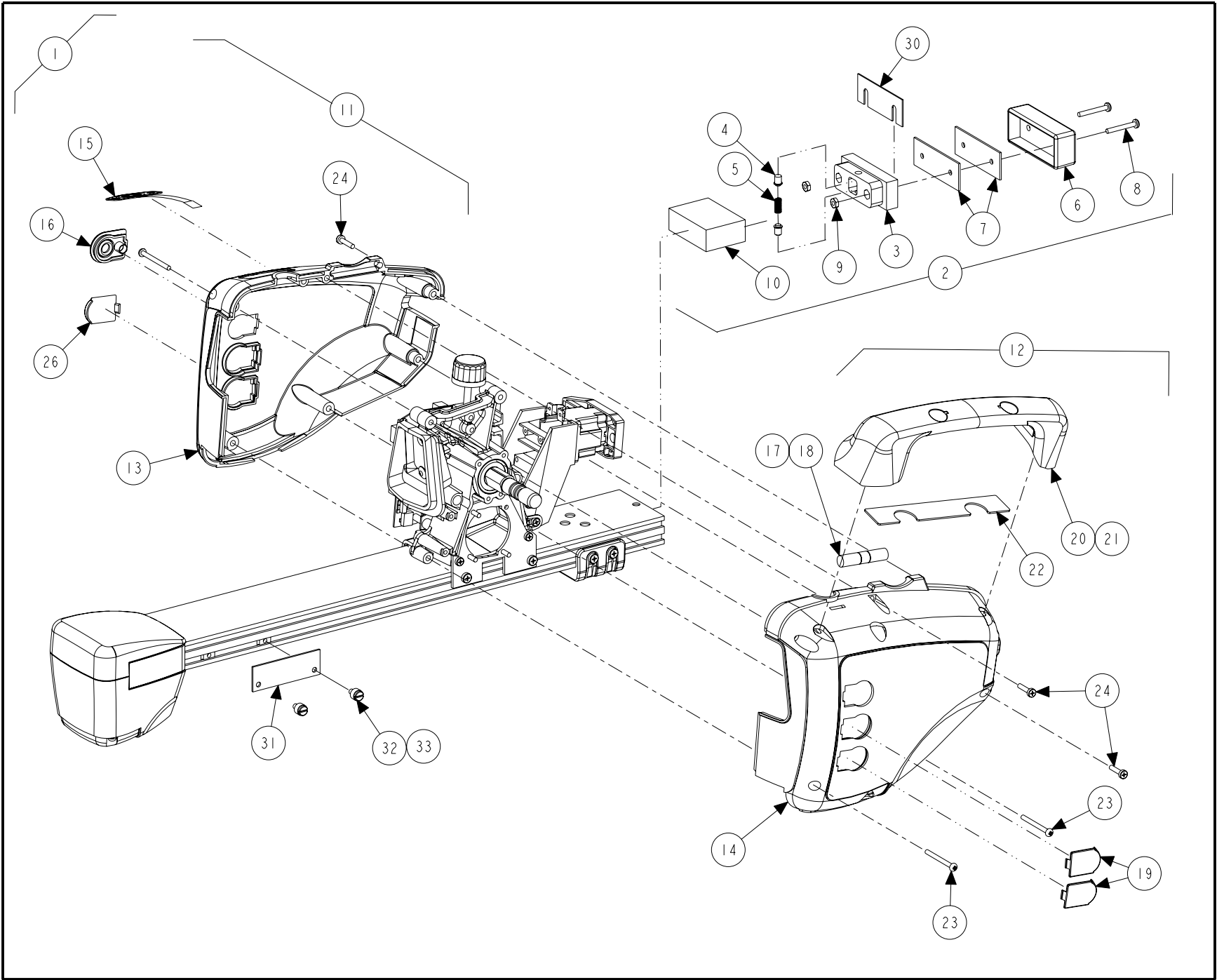
DSP504 SENSOR ASSEMBLY

© 2007 Hunter Engineering Company



PARTS DESCRIPTION LISTING

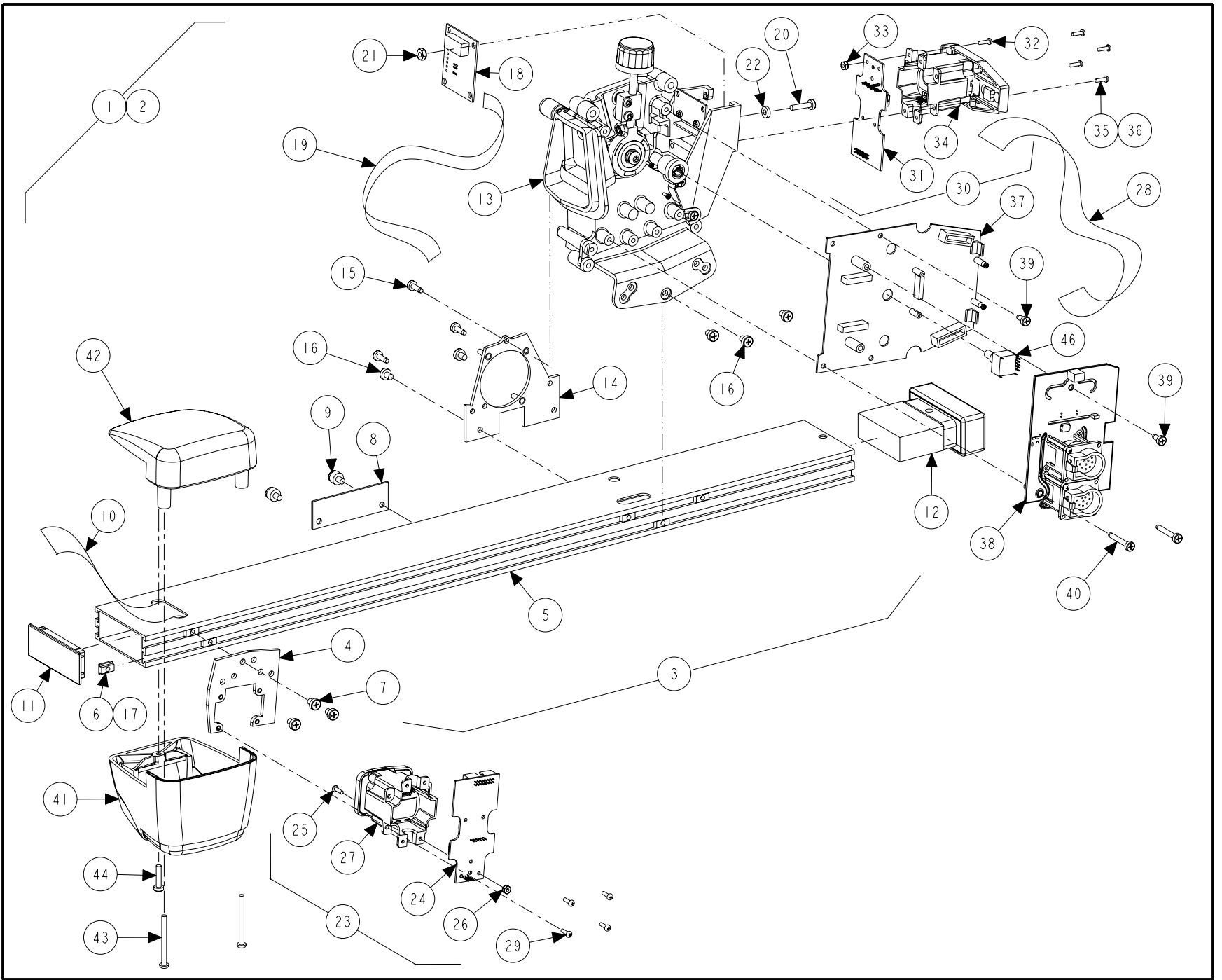
Index No.	Part Number	Description
A	125-349-1	SENSOR ASSEMBLY, DSP506/508 LEFT-FRONT (See Sheet 3,4 and 6)
B	125-350-1	SENSOR ASSEMBLY, DSP506/508 RIGHT-FRONT (See Sheet 3,4 and 6)
C	125-371-1	SENSOR ASSEMBLY, DSP504 LEFT-REAR (See Sheet 3,5 and 6)
D	125-372-1	SENSOR ASSEMBLY, DSP504 RIGHT-REAR (See Sheet 3,5 and 6)
E	38-784-3	CABLE ASSEMBLY, SHIELDED SENSOR (Not Illustrated) – quantity of 4
F	117-178-1	SENSOR HANGER, DSP500 RIGHT FRONT / LEFT REAR (Not Illustrated) – quantity of 2
G	117-179-1	SENSOR HANGER, DSP500 LEFT FRONT / RIGHT REAR (Not Illustrated) – quantity of 2
H	20-1765-1	KIT, SENSOR HANGER DSP500 (Not Illustrated)



DSP504 SENSOR ASSEMBLY
 REFER TO NEXT SHEET FOR PARTS DESCRIPTION LISTING

PARTS DESCRIPTION LISTING

Index No.	Part Number	Description	Left Rear Qty.	Right Rear Qty.	Left Front Qty.	Right Front Qty.
1	125-371-1	SENSOR ASSEMBLY, DSP504, LEFT-REAR (Includes:)	1			
OR	125-372-1	SENSOR ASSEMBLY, DSP504, RIGHT-REAR (Includes:)		1		
OR	125-349-1	SENSOR ASSEMBLY, DSP506/508, LEFT-FRONT (Includes:)			1	
OR	125-350-1	SENSOR ASSEMBLY, DSP506/508, RIGHT-FRONT (Includes:)				1
2	65-78-1	WEIGHT ASSEMBLY, COUNTER DSP500	1	1		
OR	65-83-1	WEIGHT ASSEMBLY, DSP500 NON-XF			1	1
3	53-139-2	CAP, BATTERY COVER DSP500	1	1	1	1
4	43-137-2	PLUG, BUTTON PLUNGER DSP500	2	2	2	2
5	98-395-2	SPRING, COMPRESSION COUNTER WEIGHT	1	1	1	1
6	53-142-2	CAP, BATTERY BUMPER	1	1	1	1
7	51-1979-005	PLATE, COUNTERWEIGHT, DSP500	A/R	A/R	A/R	A/R
8	75-605-2	SCREW, SELF-TAPPING #8-32	2	2		
OR	75-295-2	ROUND HEAD MACHINE SCREW 8-32 x 1 3/4 INCH			2	2
9	76-23-2	NUT, HEX 8-32	2	2		
10	65-80-2	WEIGHT, BATTERY REPLACEMENT			1	1
11	69-1084-1	COVER ASSEMBLY, RIGHT-FRONT / LEFT-REAR (Consisting Of:)	1			1
OR	69-1085-1	COVER ASSEMBLY, LEFT-FRONT / RIGHT-REAR (Not Illus.) (Cons. Of:)		1	1	
12	69-1086-1	COVER ASSEMBLY, RIGHT-FRONT / LEFT-REAR (Consisting Of:)	1			1
OR	69-1087-1	COVER ASSEMBLY, LEFT-FRONT / RIGHT-REAR (Not Illus.) (Cons. Of:)		1	1	
13	69-1055-3	COVER, RIGHT-FRONT / LEFT-REAR OUTER WITH BUMPER	1			1
OR	69-1051-3	COVER, LEFT-FRONT / RIGHT-REAR OUTER WITH BUMPER (Not Illus.)		1	1	
14	69-1044-2	COVER, DSP500 RIGHT-FRONT / LEFT-REAR INNER	1			1
OR	69-1045-2	COVER, DSP500 LEFT FRONT/RIGHT REAR INNER (Not Illus.)		1	1	
15	18-452-2	SWITCH, COMPENSATION DSP500	1	1	1	1
16	43-138-2	PLUG, BURNDY DSP500	1	1	1	1
17	25-141-2	GAGE, LEVEL VIAL DSP500	1	1	1	1
18	75-615-2	SCREW, SELF-TAPPING 4-20 x 3/8 INCH	2	2	2	2
19	53-144-2	CAP, BURNDY BLANKING	2	2	2	2
20	142-140-2	HANDLE, DSP500	1	1	1	1
21	75-616-2	SCREW, SELF TAPPING 8-16 x 1/2 INCH	2	2	2	2
22	64-150-2	PAD, HANDLE	1	1	1	1
23	75-295-2	ROUND HEAD MACHINE SCREW 8-32 x 1-3/4 INCH	3	3	3	3
24	75-414-2	PAN HEAD MACHINE SCREW 8-32 x 3/4 INCH	3	3	3	3
25	128-429-2	DECAL, REAR WHEEL DESIGNATION (Not Illustrated)	1	1		
26	53-144-2	CAP, BURNDY BLANKING	3	3	1	1
27	128-1003-3	DECAL, COMPOSITE DSP500 (Not Illustrated)	1	1	1	1
28	24-51-2	NAMEPLATE, HUNTER MODEL & PART (Not Illustrated)	1	1	1	1
29	128-390-2	DECAL, SENSOR DISCONNECT POWER (Not Illustrated)	2	2	2	2
30	65-84	WEIGHT, SHIM	A/R	A/R	A/R	A/R
31	51-1980-011	PLATE, COUNTERWEIGHT, ADJUST	1	1	1	1
32	75-613-2	SCREW, THUMB 10-32 x 1/4 INCH NYLON	2	2	2	2
33	76-382-2	NUT, T	2	2	2	2

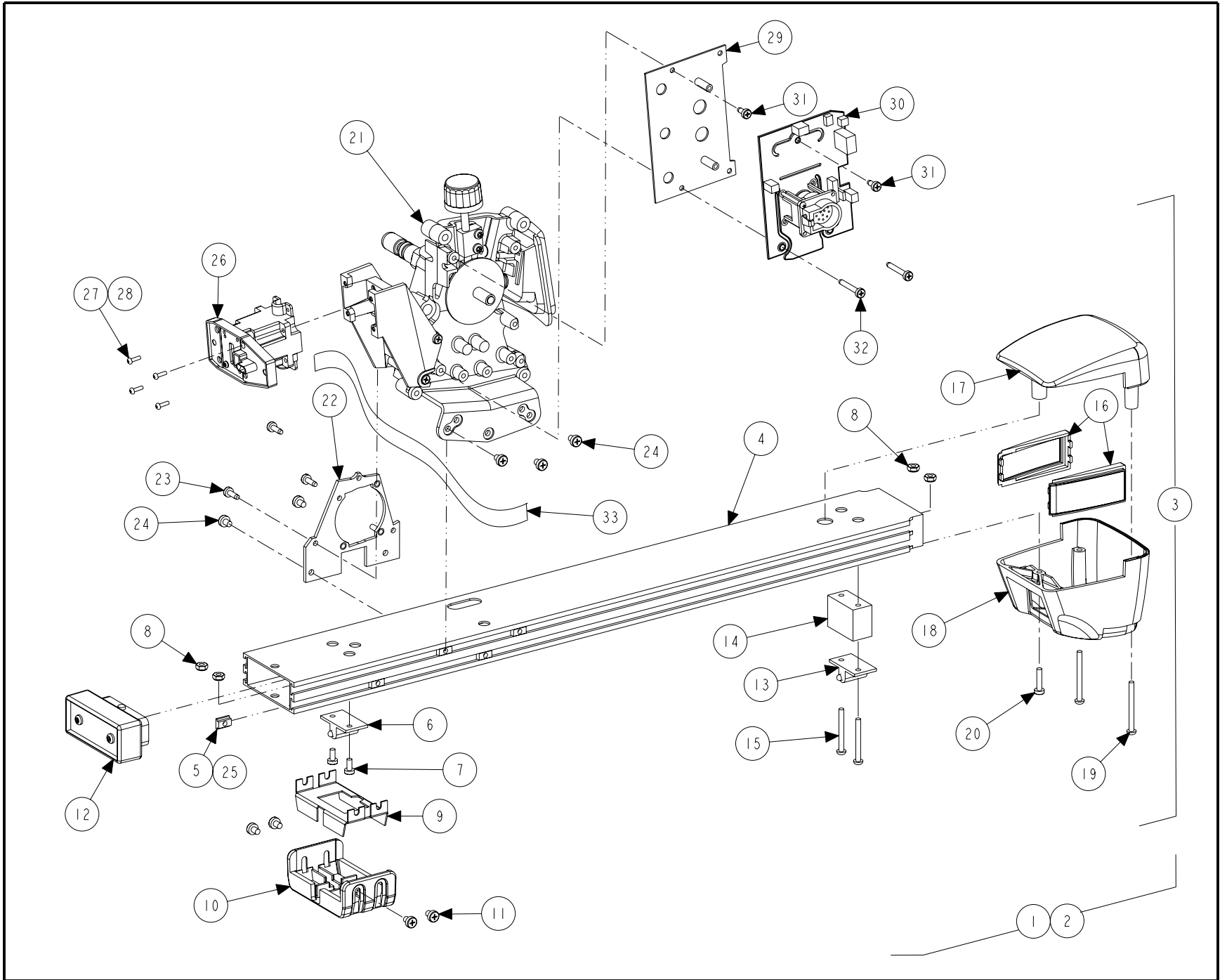


DSP504 SENSOR ASSEMBLY
 REFER TO NEXT SHEET FOR PARTS DESCRIPTION LISTING

PARTS DESCRIPTION LISTING

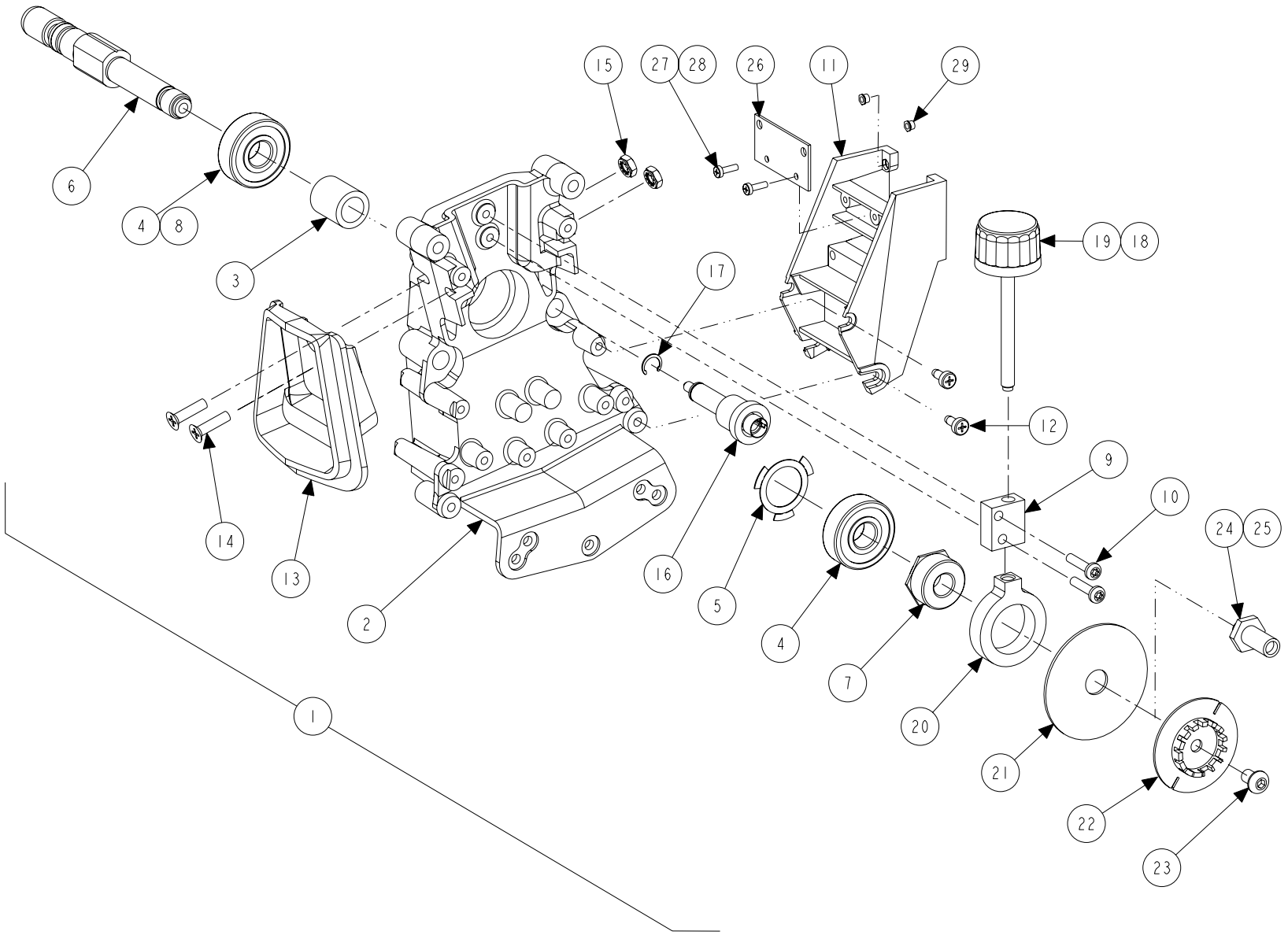
Index No.	Part Number	Description	Left Front Qty.	Right Front Qty.
1	125-349-1	SENSOR ASSEMBLY, DSP506/508, LEFT-FRONT (Includes:)	1	
OR	125-350-1	SENSOR ASSEMBLY, DSP506/508, RIGHT-FRONT (Includes:)		1
2	117-187-1	HANGER ASSEMBLY, DSP500 LEFT-FRONT / RIGHT-REAR (Consisting Of:)	1	
OR	117-188-1	HANGER ASSEMBLY, DSP500 RIGHT-FRONT / LEFT-REAR (Consisting Of:)		1
3	16-757-1	TUBE ASM, TOEARM LEFT-FRONT / RIGHT-REAR DSP500 (Consisting Of:)	1	
OR	16-758-1	TUBE ASM, TOEARM RIGHT-FRONT / LEFT-REAR DSP500 (Consisting Of:)		1
4	51-1984-1	PLATE ASSEMBLY, TRANSVERSE TOE	1	1
5	16-748-2	TUBE, TOEARM DSP500	1	1
6	76-382-2	NUT, T	5	5
7	75-608-2	PAN HEAD MACHINE SCREW 10-32 x .31 INCH	3	3
8	51-1980-011	PLATE, COUNTERWEIGHT, ADJUST	REF	REF
9	75-613-2	SCREW, THUMB 10-32 x 1/4 INCH NYLON	REF	REF
10	38-975-1	CABLE, DSP500 TRANSVERSE TOE 34 INCH	1	1
11	53-141-2	CAP, TOE ARM, DSP500	1	1
12	65-83-1	WEIGHT ASSEMBLY, DSP500 NON-XF (Refer to Sheet 3)	1	1
13	11-1081-1	SUPPORT ASSEMBLY, DSP500 LEFT-FRONT / RIGHT-REAR (Refer to Sheet 6)	1	1
OR	11-1080-1	SUPPORT ASSEMBLY, DSP500 RIGHT-FRONT / LEFT-REAR (Refer to Sheet 6)		1
14	51-1975-1	PLATE ASSEMBLY, REAR LEFT-FRONT / RIGHT-REAR, DSP500	REF	
OR	51-1974-1	PLATE ASSEMBLY, REAR RIGHT-FRONT / LEFT-REAR, DSP500		REF
15	75-441-2	SCREW, SELF-TAPPING 8-32 x .50 INCH	3	3
16	75-608-2	PAN HEAD MACHINE SCREW 10-32 x .31 INCH	5	5
17	76-382-2	NUT, T	5	5
18	109-70-2P2	TRANSDUCER, DIGITAL CAMBER / CASTER	1	1
19	38-1018-1	CABLE ASSEMBLY, OCL400 CAMBER 11 INCH	1	1
20	75-414-2	PAN HEAD MACHINE SCREW 8-32 x 3/4 INCH	3	3
21	76-71-2	NUT, KEPS 8-32	3	3
22	77-309-2	WASHER, NYLON #8	2	2
23	105-427-1	HOUSING ASSEMBLY, TRANSVERSE DSP500 (Consisting Of:)	1	1
24	232-186-1	ELECTRONIC ASSEMBLY, DSP500 TOE TRANSVERSE - FRONT	1	1
25	75-31-2	ROUND HEAD MACHINE SCREW 4-40 x .38 INCH	4	4
26	76-59-2	NUT-KEPS 4-40	4	4
27	105-432-1	HOUSING ASSEMBLY, LENS / EMITTER TRANSVERSE	1	1
28	38-976-1	CABLE, DSP500 LONGITUDINAL TOE 5.5 INCH	1	1
29	75-31-2	ROUND HEAD MACHINE SCREW 4-40 x .38 INCH	4	4
30	105-425-1	HOUSING ASSEMBLY, LONG TOE LEFT-FRONT/RIGHT-REAR (Consisting Of:)	1	
OR	105-426-1	HOUSING ASSEMBLY, LONG TOE RIGHT-FRONT/LEFT-REAR (Consisting Of:)		1
31	232-165-1	ELECTRONIC ASSEMBLY, DSP500 TOE (LONGITUDINAL)	1	1
32	75-31-2	ROUND HEAD MACHINE SCREW 4-40 x .38 INCH	4	4
33	76-59-2	NUT, KEPS 4-40	4	4
34	105-455-1	HOUSING ASSEMBLY, G2 LENS/EMITTER LEFT-FRONT / RIGHT-REAR	1	
OR	105-456-1	HOUSING ASSEMBLY, G2 LENS/EMITTER RIGHT-FRONT / LEFT-REAR		1
35	46-520-2	SPACER, 4-40 x .125 INCH WITH HEX SHOULDER	4	4
36	75-31-2	ROUND HEAD MACHINE SCREW 4-40 x .38 INCH	4	4
37	45-961-1	PCA, DSP 500 TRANSDUCER CONTROL	1	1
38	45-1053-1	PCA, DSP 500 BURNDY	1	1
39	75-326-2	SCREW, SELF-TAPPING 8-32 x 5/16 INCH	3	3
40	75-628-2	SCREW, SELF-TAPPING 8-32 x 1.12 INCH	2	2
41	69-1054-3	COVER, TOEBOX DSP500, WITH BUMPER	1	1
42	69-1047-2	COVER, TOEBOX UPPER, DSP500	1	1
43	75-295-2	ROUND HEAD MACHINE SCREW 8-32 x 1 3/4 INCH	2	2
44	75-414-2	PAN HEAD MACHINE SCREW 8-32 x 3/4 INCH	1	1
45	94-11-2	TIE, CABLE (Not Illustrated)	3	3
46	181-33-2	ELECTRO-OPTICAL DEVICE, ENCODER DSP100 SENSORS	1	1

DSP504 SENSOR ASSEMBLY
REFER TO NEXT SHEET FOR PARTS DESCRIPTION LISTING



PARTS DESCRIPTION LISTING

Index No.	Part Number	Description	Left Rear Qty.	Right Rear Qty.
1	125-371-1	SENSOR ASSEMBLY, DSP504, LEFT-REAR (Includes:)	1	
OR	125-372-1	SENSOR ASSEMBLY, DSP504, RIGHT-REAR (Includes:)		1
2	117-201-1	HANGER ASSEMBLY, DSP504, LEFT-REAR (Consisting Of:)	1	
OR	117-202-1	HANGER ASSEMBLY, DSP504, RIGHT-REAR (Consisting Of:)		1
3	16-783-1	TUBE ASSEMBLY, ARM, DSP504 (Consisting Of:)	1	1
4	16-784-2	TUBE, TOEARM DSP504, PAINTED	1	1
5	76-382-2	NUT, T	4	4
6	11-1139-1	SUPPORT ASSEMBLY, EMITTER DSP504 SHORT	1	1
7	75-91-2	PAN HEAD MACHINE SCREW 8-32 x .38 INCH	2	2
8	76-71-2	NUT, KEPS 8-32	4	4
9	14-1065	BRACKET, REAR TOE EMITTER	1	1
10	69-1141-2	COVER, EMITTER BUMPER	1	1
11	75-608-2	PAN HEAD MACHINE SCREW 10-32 x .31 INCH	4	4
12	65-78-1	WEIGHT ASSEMBLY, COUNTER DSP500 (Refer to Sheet 3)	1	1
13	11-1138-1	SUPPORT ASSEMBLY, EMITTER DSP504 LONG	1	1
14	46-557-2	SPACER, EMITTER	1	1
15	75-131-2	ROUND HEAD MACHINE SCREW 8-32 x 1.50 INCH	2	2
16	51-2080-2	PLATE, TOEBLANK DSP504	2	2
17	69-1047-2	COVER, TOEBOX UPPER, DSP500	1	1
18	69-1131-2	COVER, DSP506T TRANSTOE BOTTOM	1	1
19	75-295-2	ROUND HEAD MACHINE SCREW 8-32 x 1 3/4 INCH	2	2
20	75-414-2	PAN HEAD MACHINE SCREW 8-32 x 3/4 INCH	1	1
21	11-1198-1	SUPPORT ASSEMBLY, DSP504 LEFT-REAR (Refer to Sheet 6)	REF	
OR	11-1197-1	SUPPORT ASSEMBLY, DSP504 RIGHT-REAR (Refer to Sheet 6)		REF
22	51-1974-1	PLATE ASSEMBLY, REAR RIGHT-FRONT / LEFT-REAR, DSP500	1	
OR	51-1975-1	PLATE ASSEMBLY, REAR LEFT-FRONT / RIGHT-REAR, DSP500		1
23	75-441-2	SCREW, SELF-TAPPING 8-32 x .50 INCH	3	3
24	75-608-2	PAN HEAD MACHINE SCREW 10-32 x .31 INCH	5	5
25	76-382-2	NUT, T	5	5
26	105-445-1	HOUSING ASSEMBLY, EMITTER DSP504	1	1
27	46-520-2	SPACER, 4-40 x .125 INCH WITH HEX SHOULDER	4	4
28	75-31-2	ROUND HEAD MACHINE SCREW 4-40 x .38 INCH	4	4
29	51-2084-1	PLATE ASSEMBLY, DUMMY PCB	1	1
30	45-1077-1	DSP 504 REAR EMITTER CONTROL	1	1
31	75-326-2	SCREW, SELF-TAPPING 8-32 x 5/16 INCH	2	2
32	75-628-2	SCREW, SELF-TAPPING 8-32 x 1.12 INCH	2	2
33	38-1002-1	CABLE ASSEMBLY, EMITTER BOARD	1	1



DSP504 SENSOR ASSEMBLY
 REFER TO NEXT SHEET FOR PARTS DESCRIPTION LISTING

PARTS DESCRIPTION LISTING

Index No.	Part Number	Description	Left Rear Qty.	Right Rear Qty.	Left Front Qty.	Right Front Qty.
1	11-1198-1	SUPPORT ASSEMBLY, DSP504 LEFT-REAR	1			
OR	11-1197-1	SUPPORT ASSEMBLY, DSP504 RIGHT-REAR		1		
OR	11-1081-1	SUPPORT ASSEMBLY, DSP500 LEFT-FRONT / RIGHT-REAR			1	
OR	11-1080-1	SUPPORT ASSEMBLY, DSP500 RIGHT-FRONT / LEFT-REAR				1
2	11-1082-2	SUPPORT, SENSOR DIECAST	1	1	1	1
3	46-414-2	SPACER, BEARING	1	1	1	1
4	130-116-2	BEARING, SENSOR	2	2	2	2
5	98-323-2	SPRING, WASHER	1	1	1	1
6	97-471-2	SHAFT	1	1	1	1
7	76-313-2	NUT, HUB	1	1	1	1
8	FIELD PURCHASE	LOCTITE #609 OR PERMABOND HL138	A/R	A/R	A/R	A/R
9	121-213-2	BLOCK, LOCK	1	1	1	1
10	75-472-2	SCREW, SELF-TAPPING 8-32 x .75 INCH	2	2	2	2
11	11-1069-2	SUPPORT, LONGITUDINAL TOE	1	1	1	1
12	75-446-2	SCREW, SELF-TAPPING 8-32 x 3/8 INCH	4	4	4	4
13	101-177-2	CASTING, SENSOR HANGER	1	1	1	1
14	75-609-2	FLAT HEAD MACHINE SCREW 10 - 32 x .87 INCH	2	2	2	2
15	76-61-2	NUT, KEPS 10-32	2	2	2	2
16	178-27-1	COUPLING ASSEMBLY, ENCODER			1	1
17	112-75-2	SNAP RING 5103-37			1	1
18	FIELD PURCHASE	LOCTITE, COMPOUND 767 (ANTI-SEIZE)	A/R	A/R	A/R	A/R
19	34-127-3	KNOB, LOCK	1	1	1	1
20	223-56-2	RING, BRAKE	1	1	1	1
21	99-72-2	GEAR, SPUR 2.25 INCH	1	1	1	1
22	158-83-2	WHEEL, ENCODER			1	1
23	75-614-2	SOCKET BUTTON HEAD CAP SCREW 1/4 - 28 X 3/8 INCH			1	1
24	76-434-1	NUT ASSEMBLY, LONGIDUTINAL MAGNET DSP504	1	1		
25	FIELD PURCHASE	LOCTITE #242 OR PERMABOND #MM115	A/R	A/R		
26	51-1994	PLATE, CAMBER			1	1
27	75-639-2	PAN HEAD MACHINE SCREW 4-40 x 3/8 INCH			2	2
28	46-520-2	SPACER 4-40 x 1.25 INCH WITH HEX SHOULDER			2	2
29	46-520-2	SPACER 4-40 x 1.25 INCH WITH HEX SHOULDER	4	4		